

# 2025 IMPACT REPORT



**Dear Friends and Partners,**

As we reflect on 2025—our 20th anniversary—we recognize a year defined by resilience, learning, and continued change across the development landscape. Across our operating countries, communities faced mounting economic pressure, climate shocks, and persistent mobility barriers. Yet, together, we saw something simple and powerful: when people have reliable mobility, opportunity expands. Students get to school. Health workers reach patients. Entrepreneurs grow their incomes. Families move forward.

At World Bicycle Relief, we see the bicycle as part of a broader, systems-level solution. Through durable product design, strong local partnerships, and evidence-driven mobility solutions, we are building ecosystems that deliver lasting impact. In 2025, we continued scaling this approach while advancing the second year of our three-year strategy (2024–2026). We expanded into new geographies, improved financial access to bicycles and maintenance, and deepened our evidence base to demonstrate what is possible when mobility barriers are removed.

**Key Highlights**

- **14.7-to-1 return on investment:** New research confirms bicycles rank among the most impactful development interventions.
- **Mobility & Impact Forums:** Convened inaugural forums in Nairobi, Kampala, and Lusaka, bringing together researchers, policymakers, and practitioners to spotlight mobility poverty and sustainable solutions.
- **Strategic shift:** Advanced our model from direct implementation to scaling impact through partnerships, systems thinking, and a strengthened Buffalo Bicycle ecosystem.

Over two decades, we have demonstrated that a bicycle is far more than a mode of transport—it is a catalyst for change. In 2025, we delivered nearly 97,000 bicycles, a record year for World Bicycle Relief. As we achieve the milestone of 1 million bicycles on the road in 2026, we look beyond the numbers to the more than 5 million lives impacted through your support and partnership. Lives saved when health workers reach patients faster. Girls staying in school and pursuing their ambitions. Women farmers growing their businesses and feeding their families. This is the Power of Bicycles at work.

2025 was filled with extraordinary milestones, made possible by you—our global community of supporters and partners, and our passionate global team. And we're just getting started.

With gratitude,



**Dave Neiswander**  
Chief Executive Officer

“

*The bicycle has improved my business because I travel to different markets selling sewn clothes. Previously, I was restricted to nearby markets; as of now, I can connect with a lot of customers, allowing my tailoring business to grow and improve profits. – MARY, MALAWI*



# YOUR IMPACT UP CLOSE

Together, we surpassed a key milestone of 950,000 life-changing bicycles on the road since 2005.

With a bicycle, students arrive at school on time, community health workers reach more patients, and farmers and entrepreneurs expand their livelihoods. Each bicycle represents more than mobility—it represents time saved, income earned, and opportunities unlocked.

## 2025 IN NUMBERS



**96,630**  
BUFFALO BICYCLES  
DISTRIBUTED




**483,150**  
LIVES  
IMPACTED\*




**345**  
AUTHORIZED SALES  
OUTLETS OPENED




**7**  
OPERATING  
COUNTRIES




**727**  
MECHANICS  
TRAINED

\* Our bicycles have a multiplier effect. In the areas where World Bicycle Relief operates, the median household size exceeds five people. As many as five people can experience the positive impact from just one Buffalo Bicycle.

# PATHWAYS TO PROGRESS

In 2025, bicycle access delivered results that surpassed expectations across education, livelihoods, and health. School retention reached 95%, average monthly incomes increased by 37%, and community health workers expanded their reach by 52%—all exceeding targets. Gender allocation decisions—particularly for community health workers—were driven by service delivery need and existing registers. Nearly all bicycles remained in active use after one year, reinforcing long-term value and durability. Our social enterprise also performed well, achieving 32% growth in bicycle sales and close to 30% growth in aftermarket component sales.

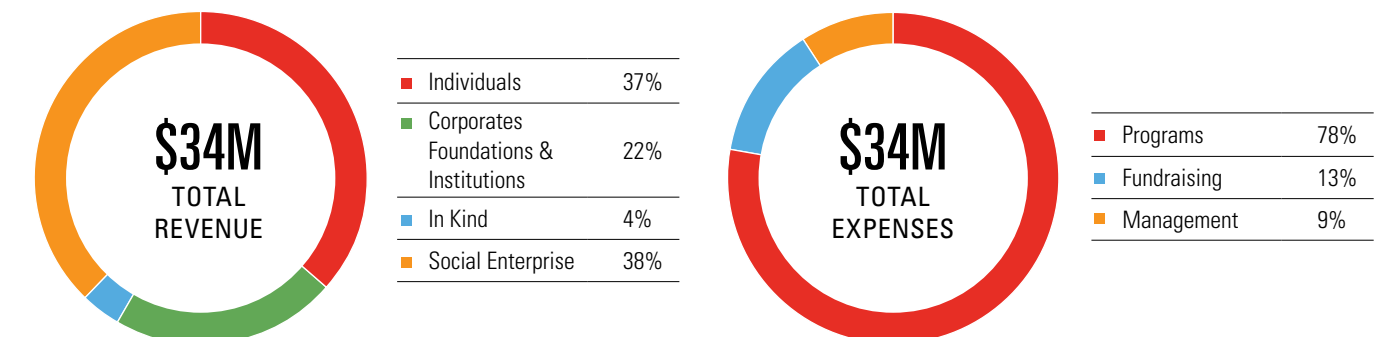
## 2025 IMPACT HIGHLIGHTS

PEOPLE OUTCOMES	Target 2025	Actual 2025*
90% annual retention rate for both boys and girls in schools	90%	95%
25% increase in average income	25%	37%
30% increase in households reached by community health workers	30%	52%
40% boost in productivity by reducing travel time	40%	33%
70% of bicycles allocated for women and girls	70%	59%

ORGANIZATIONAL	Target 2025	Actual 2025
1,500,000 additional people impacted	500,000	483,150
300,000 people mobilized with Buffalo Bicycles over three years	112,585	96,630
At least 85% of bicycles are still on the road after one year	85%	85%
25% annual growth in the sale of bicycles	25%	32%
30% annual growth in aftermarket sales of bicycle components	30%	28%

\* Based on internal and external evaluations. To learn more, please visit <https://worldbicyclerelief.org/monitoring-and-evaluation/>

World Bicycle Relief continued to grow sustainably in 2025, balancing shifts in global funding with responsible financial stewardship. Every dollar invested fuels high-impact mobility solutions that deliver measurable, lasting change.

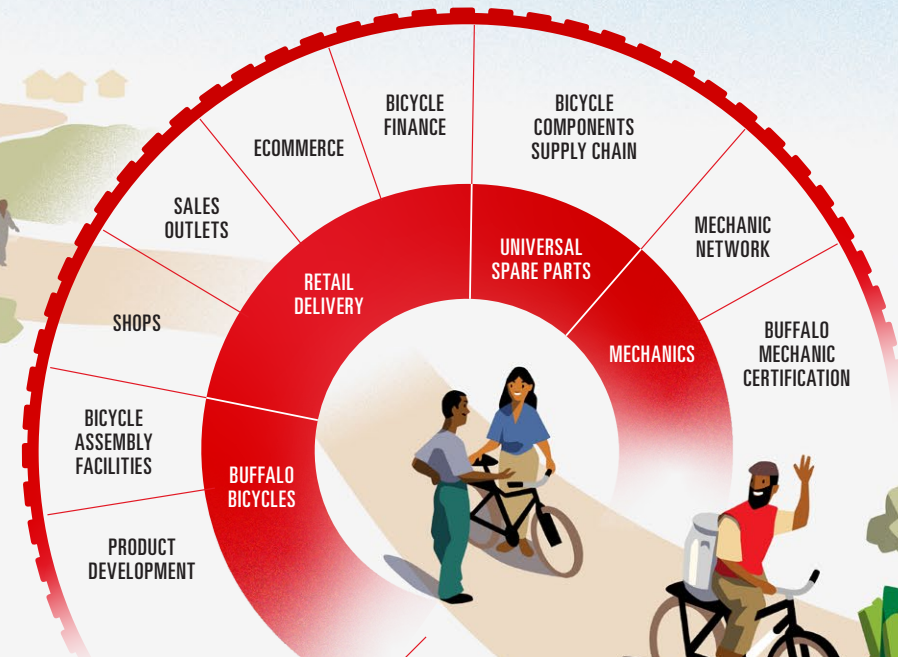


Based on 2025 Unaudited Financial Results. For audited financials, please visit: <https://worldbicyclerelief.org/financials-governance/>

# PATHWAYS TO **IMPACT**

Our mission is to mobilize individuals and communities through the Power of Bicycles.

## THE BICYCLE ECOSYSTEM



### 2026 GOALS

- 25% annual growth in the sale of bicycles through consumer finance
- 1.5 million new people mobilized with Buffalo Bicycles
- 40% boost in productivity by reducing travel time

### STRATEGY

**GROW** Expand and improve bicycle ecosystems  
Usability | Sustainability | Outreach

**PARTNER** Partner to scale impact, shift outcomes, and expand geographies  
Engagement | Co-Creation | Mobility Solutions Expertise

**INFLUENCE** Ensure bicycles are part of the global development and community resilience conversation  
Awareness | Evidence | Positioning

30% annual growth in aftermarket sales of bicycle components

At least 85% of bicycles are still on the road after one year

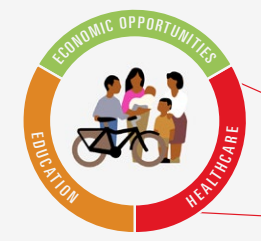
Over three years, a 90% annual retention rate is maintained for both boys and girls in schools

25% increase in average income

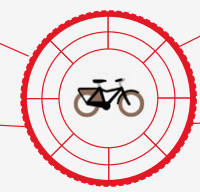
30% increase in households reached by community health workers

70% of bicycles owned and used by women and girls

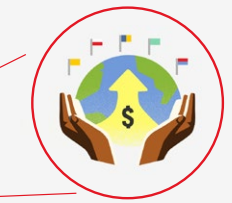
### OUTCOMES



Scale bicycle ownership and use among **women and girls, youth and marginalized groups.**



Inspire demand for high quality, affordable bicycles, maintenance and service ecosystems.



Drive global and national action for and investment in bicycle mobility.

### IMPACT

We envision a world where bicycles improve health, education, and economic outcomes so **individuals and communities can THRIVE.**

## VALUES



Relentless Learning



Accountable Empowerment



People-driven

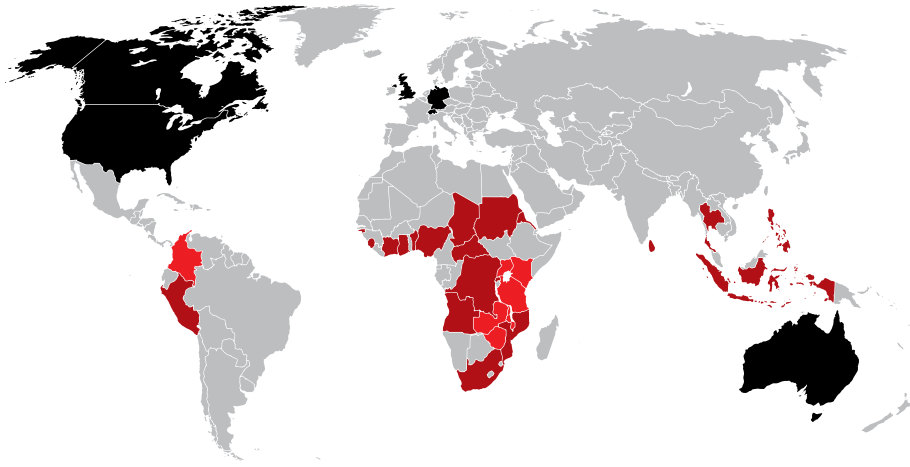


Integrity



Dynamic Collaboration

# WHERE WE WORK



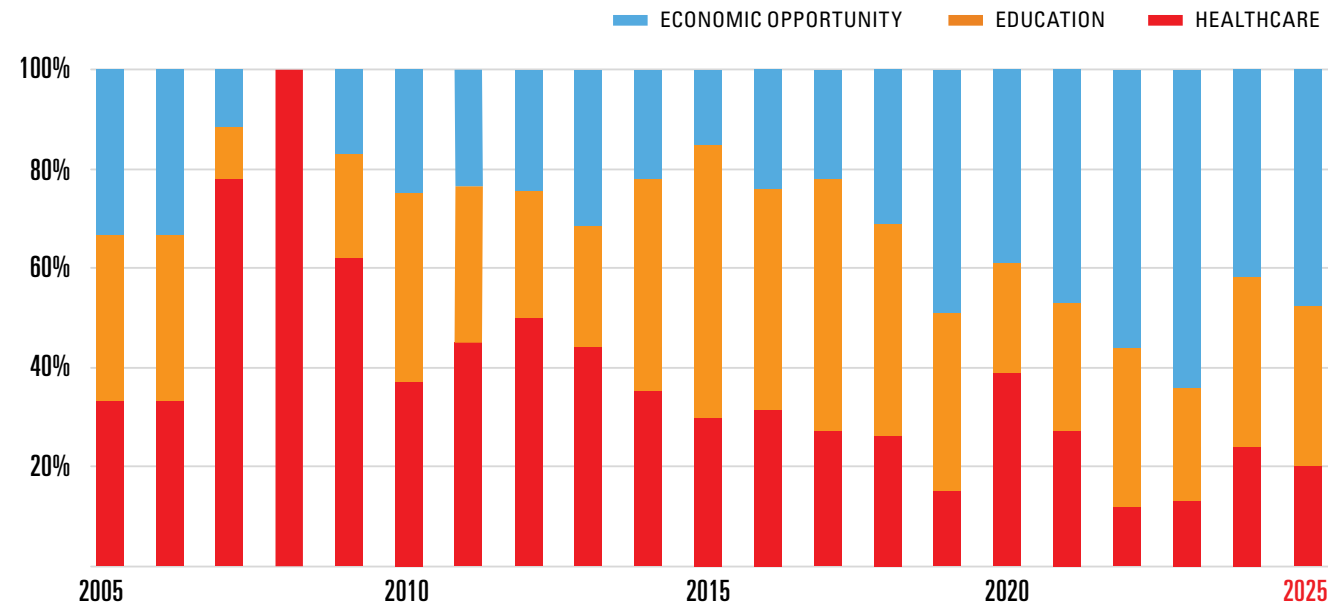
**OPERATING COUNTRIES (2025)**  
Colombia, Kenya, Malawi, Tanzania, Uganda, Zambia, Zimbabwe

**IMPACT COUNTRIES (2005-2025)**  
Angola, Benin, Burundi, Central African Republic, Chad, Democratic Republic of Congo, Eritrea, Ghana, Guinea-Bissau, Indonesia, Ivory Coast, Mozambique, Nigeria, Peru, Philippines, Rwanda, Sierra Leone, South Africa, South Sudan, Sri Lanka, Thailand

**FUNDRAISING OFFICES (2025)**  
Australia, Canada, Germany, Switzerland, UK, US

## CROSS-CUTTING IMPACT

**BICYCLES BY SECTOR 2005-2025**



**WORLD BICYCLE RELIEF** combines impactful bicycle mobility solutions with social enterprise sales to meet the staggering need for reliable, accessible, transportation in underserved markets.

# TURNING DISTANCE INTO OPPORTUNITY

3.1 billion rural people around the world live far from the nearest road. With walking as their primary mode of transportation, distance becomes a challenge—putting education, health services and economic opportunity out of reach.



“  
*My life has totally changed. Since I now ride the bicycle to school every day, I get to class on time —no more missing the first lessons. I am out of danger of asking for lifts, and I also carry my friend to school.*  
—GRACE, UGANDA



“  
*I can transport more products in less time, saving money that I reinvest into my business. The Buffalo Bicycle has become such an essential part of my life that I call it 'La Burrita' (The Little Donkey), and now everyone in town knows it by that name.*  
—DORALMA, LA GUAJIRA, COLOMBIA



“  
*With the bicycle, I can now serve 40-60 clients per day, a contribution that brings me great satisfaction and pride. This has not only eased my financial burden but also allowed me to dedicate more time to visiting under-five clinics, conducting vaccinations and raising awareness about diseases.* —JOSEPH, KASUNGU, MALAWI



# STRENGTHENING THE BICYCLE ECOSYSTEM

The value proposition of World Bicycle Relief—both in our current operating countries and in the geographies where we aim to grow—is anchored in the Buffalo Bicycle and our ability to build resilient, locally rooted bicycle ecosystems. These ecosystems ensure that bicycles are not just delivered, but sustained—through access to trained mechanics, reliable spare parts, and trusted service networks that keep people moving for years.

Through our social enterprise, we ensure riders have access to mechanics, parts, and support that keep bicycles delivering impact for years. In 2025, we advanced this work through several key initiatives:

- **Mobile repair clinics** that bring maintenance and safety training directly to riders, building local capacity to care for and extend the life of each bicycle.
- **A decentralized dealership model** that empowers local entrepreneurs to sell Buffalo Bicycles and distribute spare parts in districts beyond the reach of existing Buffalo Bicycle shops.
- **Expanded retail presence** by opening shops in areas with increasing bicycle density while extending distribution into more remote communities through local sales outlets.

By strengthening the bicycle ecosystem, we are bringing critical services closer to communities—ensuring reliability, creating economic opportunity, and maximizing the long-term impact of every bicycle delivered.

## EXPANDING WOMEN'S MOBILITY AND AGENCY

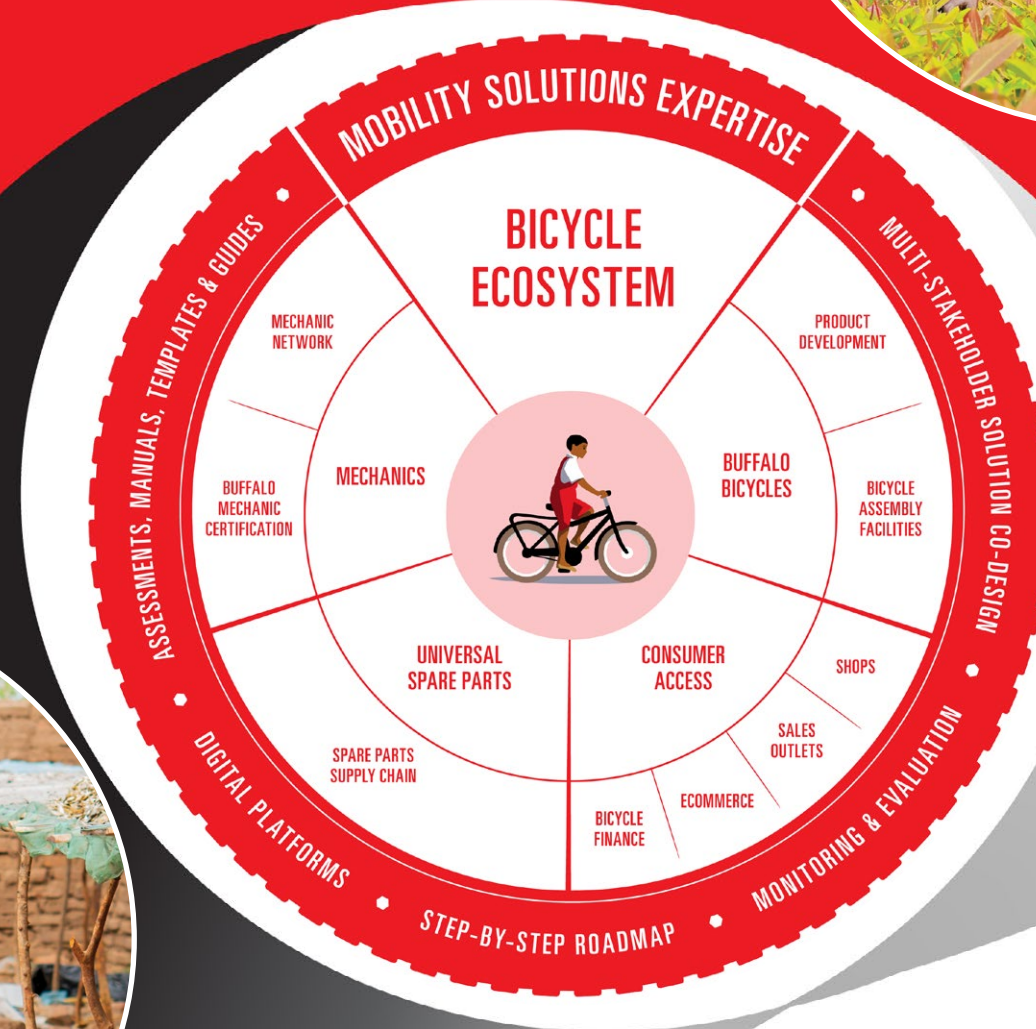
Building on our incentivized sales model (“Buy 1, Get 1”) to accelerate bicycle ownership, we launched a bicycle financing initiative in 2025. Partnerships with financial institutions in Colombia, Kenya, Malawi, Uganda, Zambia, and Zimbabwe are enabling access to affordable loans for women’s savings groups, reducing upfront cost barriers and unlocking income-generating mobility. Insights from these pilots will guide expansion to Tanzania in 2026.



“  
The bicycle has helped me expand my business.  
I used to order one bucket of fish a day. Now I can  
order two. — ANGELLA, MALAWI



“  
I now reach the nursery in just  
30 minutes without incurring any  
transport costs. This has not only  
helped me save money but also  
provided a sense of convenience,  
reliability, and safety. — CHRISTINE,  
TREE SEEDLING SALES, UGANDA



## KEEPING BICYCLES ROLLING

World Bicycle Relief’s mechanics are integral to the sustainability of Buffalo Bicycles. As trusted local ambassadors, they ensure communities have reliable access to quality maintenance and spare parts while building their own economic opportunities. In 2025, mechanics expanded their role as spare parts agents, stocking and selling components through connected retail networks—strengthening local bicycle ecosystems while creating new entrepreneurial opportunities.

# MOBILITY DRIVES MEASURABLE, SUSTAINED CHANGE

Independent research continues to validate the transformative role of bicycle mobility.

Now, second-year findings of our randomized controlled trial with IDinsight in Zambia reveal how sustained bicycle use not only creates immediate gains but also strengthens economic returns, resilience and well-being over time.

## The impact of bicycle ownership:

- 54% higher monthly income among women
- 30% decrease in reliance on motorized transport
- 29% higher monthly household consumption
- Up to 24 people transported per year to health centers by Community Health Workers

Our IDinsight RCT remains a foundational proof point—and the evidence from 2025 continues to demonstrate bicycles as a cost-effective, last-mile solution.

## SHOWCASING RETURN ON INVESTMENT

The IDinsight findings show that bicycles deliver a **14.7-to-1 return on investment over five years**, underscoring their value as one of the most cost-effective and impactful sustainable development interventions.



SCAN FOR THE FULL REPORT



## ACCELERATING HEALTH ACCESS IN UGANDA

In partnership with Uganda's Ministry of Health, World Bicycle Relief hosted the **Pedal for Change Forum** to highlight evidence showing how reliable transportation strengthens community health service delivery. Findings confirm that Community Health Extension Workers (CHEWs) equipped with Buffalo Bicycles reach more households, respond to emergencies faster and spend more time with patients.

- **108%** increase in the number of households served by CHEWs
- **71%** of CHEWs used their bicycles to transport patients
- **47%** reduction in CHEWs' travel time to health facilities
- **95%** of CHEWs increased their monetary savings, primarily due to a **61%** reduction in transport expenditures through the Buffalo Bicycle



*In my village, my Buffalo Bicycle is referred to as the village ambulance.*

— CHEW, UGANDA



SCAN FOR THE FULL REPORT

# IMPACT TO DATE\*



**965,000**  
BICYCLES DISTRIBUTED\*\*



**4.8M**  
LIVES IMPACTED



**4,300**  
MECHANICS TRAINED



**101**  
BUFFALO BICYCLE SHOPS

\* As of December 31, 2025

\*\* Includes bicycles distributed in WBR's 7 operating countries and 21 impact countries.

## COUNTRY SNAPSHOTS

### COLOMBIA



Year Established: 2020

	2025	TOTAL TO DATE
WBR Funded Bicycles	4,971	38,122
Social Enterprise Bicycles	3,782	13,753
Total Bicycles Distributed	8,753	51,875
Mechanics Trained	20	234
Shops Opened	0	3

### KENYA



Year Established: 2010

	2025	TOTAL TO DATE
WBR Funded Bicycles	7,147	53,453
Social Enterprise Bicycles	4,117	41,398
Total Bicycles Distributed	11,264	94,851
Mechanics Trained	83	516
Shops Opened	0	19

### MALAWI



Year Established: 2017

	2025	TOTAL TO DATE
WBR Funded Bicycles	6,161	38,717
Social Enterprise Bicycles	11,605	70,008
Total Bicycles Distributed	17,766	108,725
Mechanics Trained	412	697
Shops Opened	0	21



### TANZANIA



Year Established: 2024

	2025	TOTAL TO DATE
WBR Funded Bicycles	4,289	4,370
Social Enterprise Bicycles	198	199
Total Bicycles Distributed	4,487	4,569
Mechanics Trained	77	80
Shops Opened	2	2

### UGANDA



Year Established: 2023

	2025	TOTAL TO DATE
WBR Funded Bicycles	3,339	12,162
Social Enterprise Bicycles	1,664	4,006
Total Bicycles Distributed	5,003	16,228
Mechanics Trained	105	280
Shops Opened	1	11

### ZAMBIA



Year Established: 2007

	2025	TOTAL TO DATE
WBR Funded Bicycles	3,395	99,558
Social Enterprise Bicycles	21,442	240,665
Total Bicycles Distributed	24,837	340,223
Mechanics Trained	23	1,395
Shops Opened	0	32

### ZIMBABWE



Year Established: 2010

	2025	TOTAL TO DATE
WBR Funded Bicycles	4,200	68,581
Social Enterprise Bicycles	7,475	139,190
Total Bicycles Distributed	11,675	207,771
Mechanics Trained	27	1,108
Shops Opened	0	13

# A PARTNERSHIP MODEL BUILT FOR IMPACT

Solving mobility poverty at scale requires collaboration. Through our Partner Pathway, we align with governments, NGOs, development partners and the private sector to co-create and scale mobility solutions. These partnerships demonstrate how we can inspire large-scale commitments and integrate Buffalo Bicycles into national priorities in education and health, and drive economic opportunities.

## COLOMBIA POLICY CHANGE UNLOCKS SCHOOL ACCESS

After 18 months of collaboration with the Córdoba Department, 4,000 bicycles will reach 172 schools across all 30 municipalities. This government-led initiative embeds sustainable bicycle mobility into education systems, helping keep at-risk students in school while enabling scalable impact.

## MALAWI BUILDING SKILLS AND ECONOMIC OPPORTUNITIES

In partnership with CAMFED, former mentors from their girls' education program were trained as bicycle mechanics by World Bicycle Relief's female assemblers and placed in paid, year-long internships at Buffalo Bicycle shops to gain hands-on experience in repair, sales, and inventory—building marketable skills locally.

## KENYA EXPANDING FARMER REACH

Through a partnership with One Acre Fund, we equipped 1,273 field extension agents and supervisors with bicycles across six regions. Improved mobility enables agents to reach more smallholder farmers each day—delivering inputs, training, and agricultural extension efficiently. The result is higher productivity, stronger farmer engagement, and expanded access to farm inputs and services that strengthen livelihoods.

## TANZANIA HEALTH WORKERS GAIN LAST-MILE MOBILITY

Working with Tanzania's Ministry of Health, World Bicycle Relief advanced a multi-year initiative to equip 10,000 community health workers with bicycles. Early results show strong impact: After the delivery of 450 bicycles in early 2025, 75% of health workers reported increased productivity and 65% reported transport cost savings, enabling more frequent household visits and improved access to care.

## ZAMBIA BICYCLES POWER COMMUNITY HEALTH DELIVERY

A partnership with the Churches Health Association of Zambia is strengthening community-level immunization outreach in hard-to-reach districts across the country. 550 purpose-built Buffalo Bicycles were provided to Community Health Workers (CHWs) to expand immunization outreach, cutting travel time by up to half for a CHW serving Kitwe.

## UGANDA AFFORDABLE MOBILITY STRENGTHENS LIVELIHOODS

We piloted an incentivized sales "Buy 1, Get 2" model with Lira Resort, an agribusiness partner, improving bicycle affordability for smallholder farmers. Participants reported reduced transport costs, time savings, increased load capacity, and improved market access—informing future scaling of market-based mobility solutions.

## ZIMBABWE FASTER RESPONSE PROTECTS PEOPLE, WILDLIFE

Partnering with the International Fund for Animal Welfare, we equipped Primary Response Teams with Buffalo Bicycles to support human-wildlife coexistence. Bicycle-equipped teams expanded patrol coverage by 4x and reduced response times by 60%, strengthening community safety and conservation outcomes.



SCAN TO SEE MORE ABOUT CAMFED MECHANICS



# RIDING FARTHER TOGETHER

In 2025, World Bicycle Relief celebrated two decades of impact—alongside communities, partners, and champions who believe that where you live should not determine how far you can go. As we look back on what we've built together, we also look ahead—committed to scaling proven solutions that meet today's growing mobility needs.



Our global supporters combine impact and fun through events and activations that highlight the vital role of life-changing bicycles. Thank you!



## TECHBIKERS

The 12th annual TechBikers ride from Berlin to Copenhagen raised more than €150,000 in donations for the Power of Bicycles.

## BIKE FILM TOUR

Our "Building the Buffalo" film was featured at the European Bike Film Tour. The World Bicycle Relief Germany team participated in several of the 23 screenings, reaching approximately 10,000 viewers across five countries in Europe. The tour sparked valuable conversations, inspiring new supporters for our mission.



## 2025 PEDAL TO EMPOWER

Our 6th annual Pedal to Empower movement welcomed more than 36,000 participants from 53 countries and raised over \$1 million to mobilize women and girls with bicycles. We also celebrated World Bicycle Day in June with events in Chicago, Washington, D.C., Kenya and Colombia.



Join the global movement at [pedaltoempower.com](https://pedaltoempower.com).



## COMMUNITY SPOTLIGHT

## THE AFRICA PROJECT

In an epic 4,500 km, 8-week bikepacking journey through East Africa, New Zealand Olympians Hamish Legarth and Nicole Shields raised \$30,000 and spread awareness for bicycle mobility.



## TOMMY DAVIES AND JUDE ORGAN

Tommy Davies and Jude Organ cycled 5,000 km from Istanbul to London, raising \$30,000 to help change lives through World Bicycle Relief.



VISIT OUR WALL OF HONOR CELEBRATING THE INDIVIDUALS, FAMILIES, AND ORGANIZATIONS WHOSE SUPPORT HELPED DRIVE IMPACT IN 2025



# PARTNERSHIPS THAT PROPEL PROGRESS

Together with our institutional, foundation, and corporate partners, we are moving forward and enabling communities to thrive through the Power of Bicycles. For 20 years, your support has propelled a ripple effect of change for riders around the world.

The need for mobility has never been greater—and neither has the opportunity to act. Partner with World Bicycle Relief to engage your employees, inspire customers, and contribute to measurable, lasting change. As we enter our third decade, we invite you to help shape the future of mobility—together.

To explore partnership opportunities, contact: [partners@worldbicyclerelief.org](mailto:partners@worldbicyclerelief.org)



## TWO DECADES OF PARTNERSHIP

From day one, SRAM has been more than a supporter—they've been a driving force behind our mission and a cornerstone of our progress. SRAM helped celebrate a two-decade partnership of impact and mobility as the Presenting Sponsor for our Communities on the Move event in Chicago.



## RADL GRVL

Australia's second annual premiere gravel cycling event, named World Bicycle Relief as its official charity partner in 2025 and helped to fund more than 700 Buffalo Bicycles.

## TRAILBLAZER AWARD

Recognizing the critical gap in healthcare access, Amref Health Africa's shared mission has helped put bicycles into the hands of thousands of frontline health workers since 2014. This transformative partnership bridges the "last mile" in healthcare, ensuring that no household is too far away to receive essential care.



## RIDE LIKE KING

The 17th annual Ride Like King event, inspired by Giant Group founder King Liu, drew a record number of global participants and resulted in 700 Buffalo Bicycles donated to communities around the world.



## BUILDING ON A LONG-STANDING PARTNERSHIP

UNICEF Colombia launched a campaign to mobilize 500 girls with Buffalo Bicycles in the La Guajira region, supporting students' access to education and water collection.



SCAN TO SEE OUR 20 CHAMPIONS OF CHANGE



# PEDALING FORWARD

From 20 years of proven impact to the next era of growth, World Bicycle Relief is scaling what works—guided by evidence, strengthened through learning, and powered by bold partnerships. Together with governments, communities, riders, the private sector, and development partners, we are expanding access to mobility solutions where they are needed most.

**With the Buffalo Bicycle at the center, we are unlocking opportunity, strengthening livelihoods, and connecting people to what matters most—one ride at a time.**



“  
*My commute was reduced by more than half. Now I arrive at school punctually and ready to engage in my studies having additional time and energy, resulting in better grades.* —VIVIAN, MUMIAS EAST, KENYA

“  
*Since receiving the bicycle, it has been a great help in avoiding walking long distances to fetch water. I save about 300,000 pesos (74 USD) a month, which I use to buy more food for the household and invest in my business.* —BETTY, LA GUAJIRA, COLOMBIA

“  
*I now reach every one of my designated farms and meetings on schedule. I've effectively responded to over 90% of veld fire and human-wildlife conflict calls, an achievement I never managed before.* —SAZISO, HWANGE, ZIMBABWE

SCAN TO SEE HIGHLIGHTS FROM OUR PAST 20 YEARS, AND WHERE WE'RE GOING NEXT!



WE ENVISION A WORLD WHERE  
BICYCLES IMPROVE HEALTHCARE  
AND EDUCATION OUTCOMES  
AND BROADEN ECONOMIC  
OPPORTUNITIES SO INDIVIDUALS  
AND COMMUNITIES CAN THRIVE.

Our mobility solutions directly contribute to achieving nine of the United Nations' 17 Sustainable Development Goals (SDGs) that aim to end poverty, protect the planet, and ensure prosperity for all by 2030.



**WORLD BICYCLE RELIEF®**

© 2026 World Bicycle Relief. All rights reserved.

World Bicycle Relief  
1000 W. Fulton Market, 4th Floor  
Chicago, IL 60607  
USA  
T: 312-664-3836  
info@worldbicyclerelief.org

**f** facebook.com/worldbicyclerelief  
**x** x.com/PowerOfBicycles  
**@** instagram.com/worldbicyclerelief  
**y** youtube.com/worldbicyclerelief  
**in** linkedin.com/company/world-bicycle-relief

World Bicycle Relief, NFP is a 501c-3  
organization (EIN) 20-5080679

WORLDICYCLERELIEF.ORG

