

COLOMBIA



53.9M*
POPULATION

11.2%
RURAL

42.6%
URBAN

13.4%
UNEMPLOYED

31.8%
IN POVERTY

32.5
MEDIAN AGE

2019
YEAR
ESTABLISHED

51,875
BICYCLES
DISTRIBUTED

234
MECHANICS
TRAINED

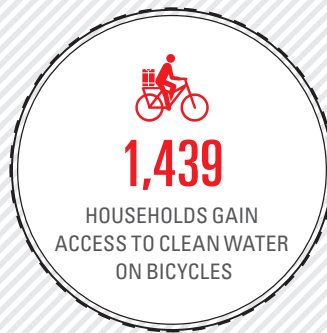
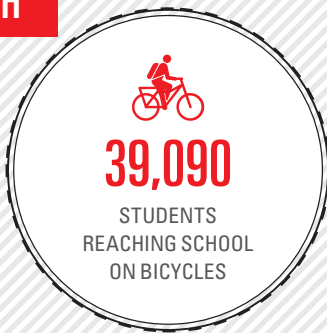
3,593
BUFFALO
ACADEMY**

32
STAFF
EMPLOYED

\$129,696
SPARE PARTS
SALES ('25)

OUR REACH

2019-2025



Content above reflects activity through December 31, 2025

*Sources - population figures and poverty rate: World Bank Development Indicators; unemployment rate and median age: national statistical agency.

**The Buffalo Academy trains students on bicycle maintenance.

PATHWAYS TO IMPACT 2024-2026

GROW



2,000+ student mechanics to be trained in the Buffalo Academy in 2025 alone, with an ambitious target of 9,000 by 2027

250 bicycles sold to consumers

\$355,000 in spare parts sales

***World Bicycle Relief-funded Buffalo Bicycles will be distributed through the Grow and Partner pathways.*

PARTNER



1 strategic partnership with UNICEF established to pilot WASH concept

3 national-level MOUs with Rural Development Agency, FAO, and MoEd

Leverage Antioquia evidence to submit at least five proposals to regional/local governments and establish at least two new similar programs

23,700 bicycles included in partnership agreements with organizations

Expand private sector relationships

INFLUENCE



Continue developing Colombia-specific evidence base, especially with Antioquia partnership, to make case for similar activities

Deepen engagement in sector-specific focus areas of education, economic development, and WASH

Present strategy, theory of change, and evidence of impact to national level ministries to promote bicycle mobility in programming

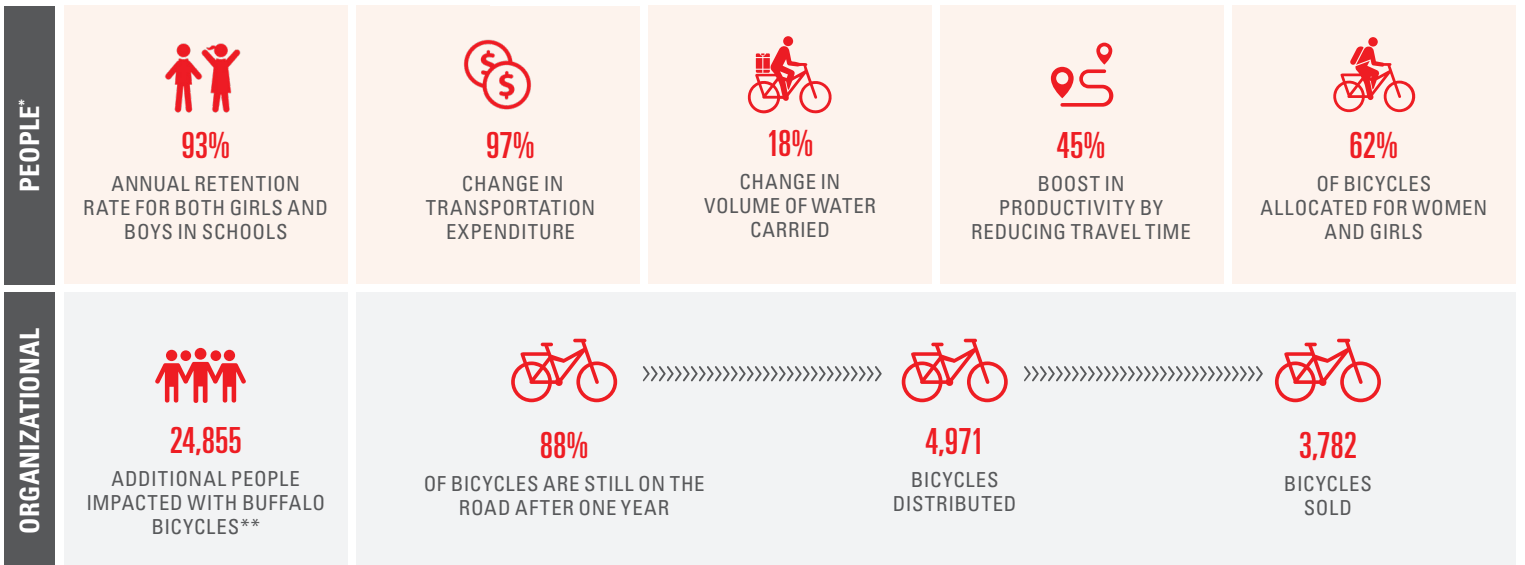
GLOBAL STRATEGY

In 2024, World Bicycle Relief (WBR) launched its new three-year strategy (2024–2026) to scale the Power of Bicycles, prioritizing bicycle ownership and use among women, youth, and marginalized groups to improve outcomes in healthcare, education, and economic opportunities. Over three years, we aim to mobilize an additional 300,000 individuals, impacting 1.5 million lives in seven operating countries, including Colombia.

COLOMBIA IMPACT IN 2025

World Bicycle Relief combines impactful bicycle mobility solutions with social enterprise sales to meet the staggering need for reliable, accessible transportation in underserved markets. We measure progress toward reaching our 3-year global impact targets in two key areas: impact on People and Organizational performance.

COLOMBIA OUTCOMES IN 2025



*Outcome data source: WBR monitoring data, 2025

**In the areas where World Bicycle Relief operates, the median household size exceeds 5 people, and research shows that bicycles in these households have multiple users and purposes. This results in a substantial 5x impact multiplier for each distributed bicycle.



View our latest global impact report from 2025: <https://worldbicyclerelief.org/your-2025-impact-report/>