

MALAWI



21.6M*
POPULATION

82.73%
RURAL

17.27%
URBAN

18.52%
UNEMPLOYED

50.7%
IN POVERTY

17
MEDIAN AGE

2017
YEAR
ESTABLISHED

108,725
BICYCLES
DISTRIBUTED**

645
MECHANICS
TRAINED

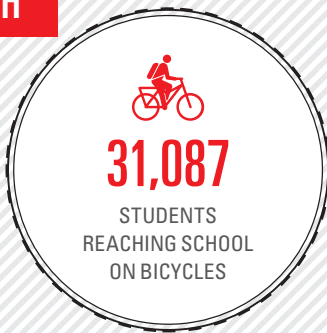
21
BUFFALO
SHOPS

56
STAFF
EMPLOYED

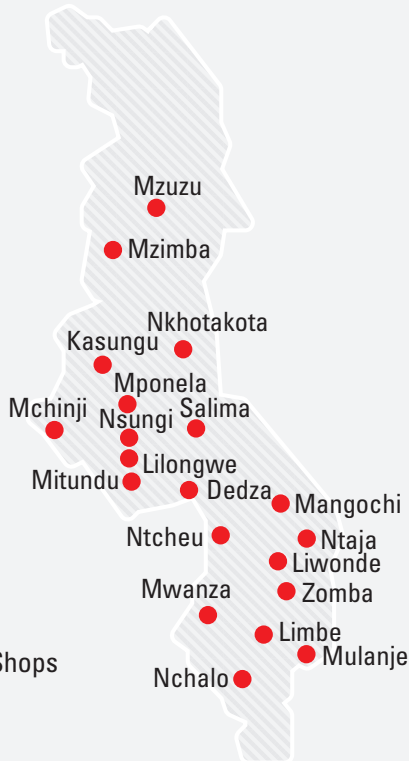
\$418,302
SPARE PARTS
SALES ('25)

OUR REACH

2017-2025



OUR PRESENCE



Content above reflects activity through December 31, 2025

*Sources - population figures: World Bank Development Indicators; poverty rate, unemployment rate, and median age: national statistical agency.

**Includes bicycles distributed in the environment sector.

PATHWAYS TO IMPACT 2024-2026

GROW



- 2 shops added
- 780 more mechanics trained
- 4,510 bicycles sold to consumers
- \$664K in spare parts sales

***World Bicycle Relief-funded Buffalo Bicycles will be distributed through the Grow and Partner pathways.*

PARTNER



- 3 strategic partnerships established
- 2 MOUs with government ministries signed
- 39,500 bicycles sold to organizations
- Active member of NGO/development partner forums

INFLUENCE



- Leverage** work by Bicycles For Growth (BFG) to promote a non-motorized transport policy promoting bicycle mobility
- Engage** with and present BFG findings and relevant Mobilized Communities results at development partner forums
- Establish** the financial products being piloted and tested through the SACCOs and MFIs as mainstream products

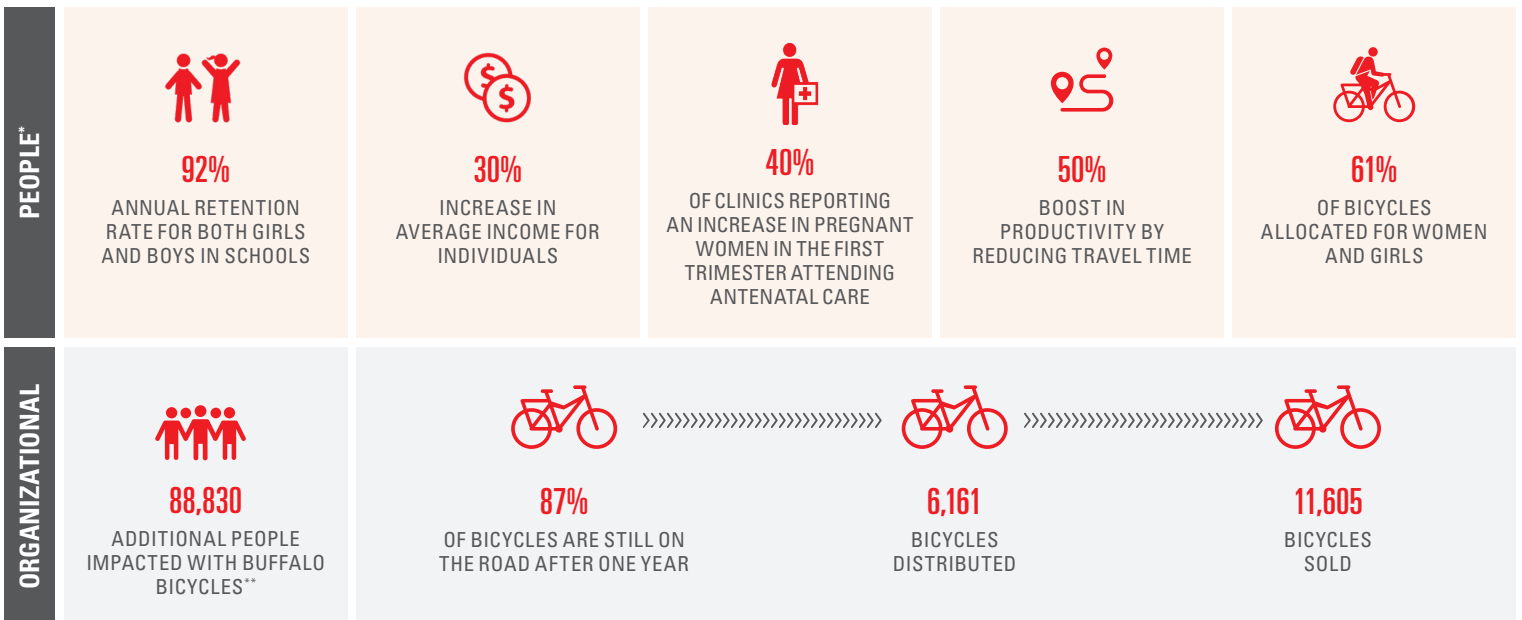
GLOBAL STRATEGY

World Bicycle Relief (WBR) launched a new three-year strategy (2024–2026) to scale the Power of Bicycles, prioritizing bicycle ownership and use among women, youth, and marginalized groups to improve outcomes in healthcare, education, and economic opportunities. Over three years, WBR aims to mobilize an additional 300,000 individuals, impacting 1.5 million lives in seven operating countries, including Malawi.

MALAWI IMPACT IN 2025

World Bicycle Relief combines impactful bicycle mobility solutions with social enterprise sales to meet the staggering need for reliable, accessible transportation in underserved markets. We measure progress toward reaching our 3-year global impact targets in two key areas: impact on People and Organizational performance.

MALAWI OUTCOMES IN 2025



* Stats Source for People Outcomes: Malawi monitoring data, 2025, and Zomba Mobilized Communities Annual Assessment, 2024

** In the areas where World Bicycle Relief operates, the median household size exceeds 5 people, and research shows that bicycles in these households have multiple users and purposes. This results in a substantial 5x impact multiplier for each distributed bicycle.



View our latest global impact report from 2025: <https://worldbicyclerelief.org/your-2025-impact-report/>