

ZIMBABWE



16.6M*
POPULATION

60.11%
RURAL

39.89%
URBAN

20.70%
UNEMPLOYED

57%
IN POVERTY

18.3
MEDIAN AGE

2009
YEAR
ESTABLISHED

215,512**
BICYCLES
DISTRIBUTED

1,108
MECHANICS
TRAINED

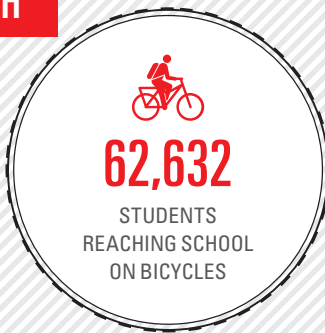
13
BUFFALO
SHOPS

44
STAFF
EMPLOYED

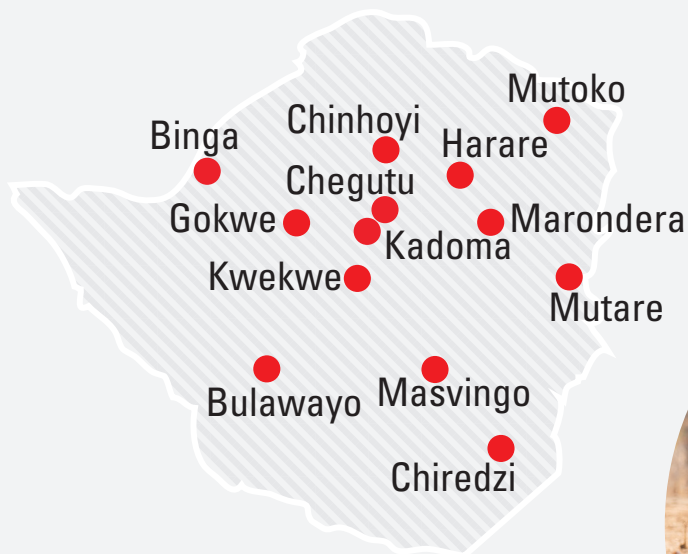
\$655,854
SPARE PARTS
SALES ('25)

OUR REACH

2009-2025



OUR PRESENCE



Content above reflects activity through December 31, 2025

*Sources - population figures: World Bank Development Indicators; unemployment and poverty rate and median age: National Statistical Agency

**Includes bicycles distributed in the environment sector

PATHWAYS TO IMPACT 2024-2026

GROW



- 6 shops added
- 130 more mechanics trained
- 19,008 bikes sold to consumers
- \$2.3M in spare parts sales

***World Bicycle Relief-funded Buffalo Bicycles will be distributed through the Grow and Partner pathways.*

PARTNER



- 4 strategic partnerships established with NGO partners with existing activities with MoH, MoEd, MoAg, and MoTourism
- 26,400 bikes sold to organizations

INFLUENCE



- Deepen** existing relationships with government agencies to pursue reduction in duties and assembler rebate on bicycles and spares
- Utilize** Mobilized Communities findings to advocate for increased inclusion of mobility in MoH programs

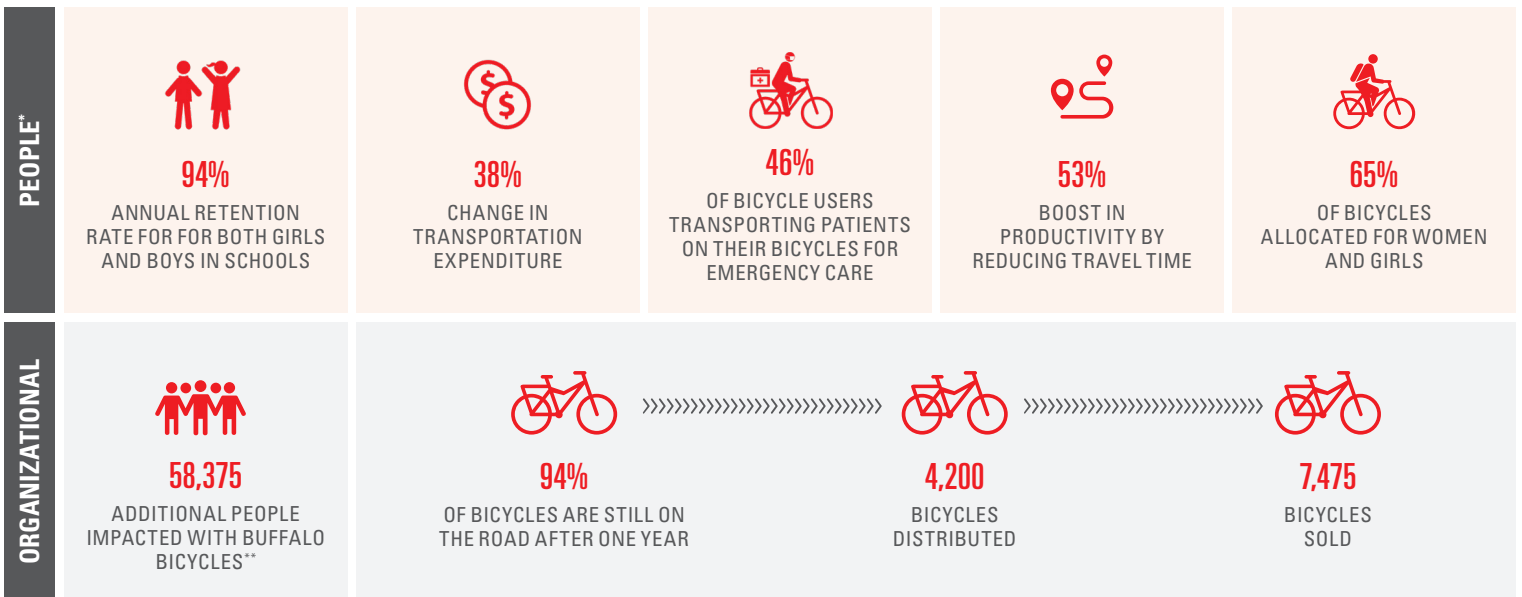
GLOBAL STRATEGY

In 2024, World Bicycle Relief (WBR) launched its new three-year global strategy (2024–2026) to scale the Power of Bicycles, prioritizing bicycle ownership and use among women, youth, and marginalized groups to improve outcomes in healthcare, education, and economic opportunities. Over three years, we aim to mobilize an additional 300,000 individuals, impacting 1.5 million lives across seven operating countries, including Zimbabwe.

ZIMBABWE IMPACT IN 2025

World Bicycle Relief combines impactful bicycle mobility solutions with social enterprise sales to meet the staggering need for reliable, accessible transportation in underserved markets. We measure progress toward reaching our 3-year global impact targets in two key areas: impact on People and Organizational performance.

ZIMBABWE OUTCOMES IN 2025



*Stats Source for People Outcomes: WBR Hwange Mobilized Communities Endline Evaluation Report, 2025

**In the areas where World Bicycle Relief operates, the median household size exceeds 5 people, and research shows that bicycles in these households have multiple users and purposes. This results in a substantial 5x impact multiplier for each distributed bicycle.



View our latest global impact report from 2025: <https://worldbicyclerelief.org/your-2025-impact-report/>